

# SAMUEL HEATH

## Product Data Sheet

### P6040/P6044/P6046 Door Handle

(For use with P8010)

#### Fitting Instruction

1. Insert spindle (A) into the lockcase so that it sits at an equal distance out of each side of the door.

2. Slide over the spindle the alignment washer (C) and chassis (B) - this alignment washer (C) will ensure that the chassis (B) is concentric with the spindle (A)  
- Do this on both sides of the door.

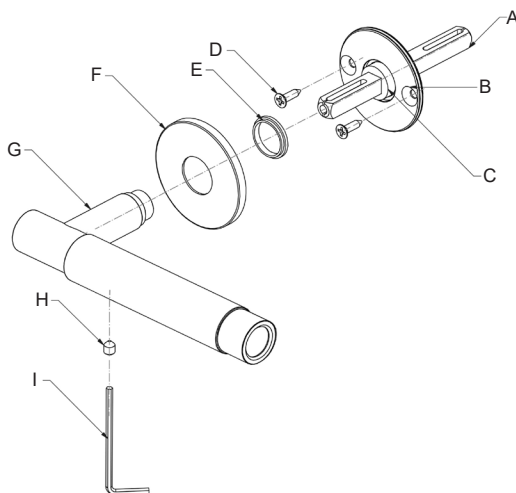
3. Secure chassis (B) in place using screws (D), and remove alignment washer (C) - Do this on both sides of the door.

4. Push shoulder washer (E) into chassis (B).

5. Push rose (F) onto chassis (B).

6. Push handle assembly (G) onto the spindle (A) and butt up against the shoulder washer (E).

7. Secure in place using grub screw (H) and Allen key (I). Repeat the process on the other side of the door.

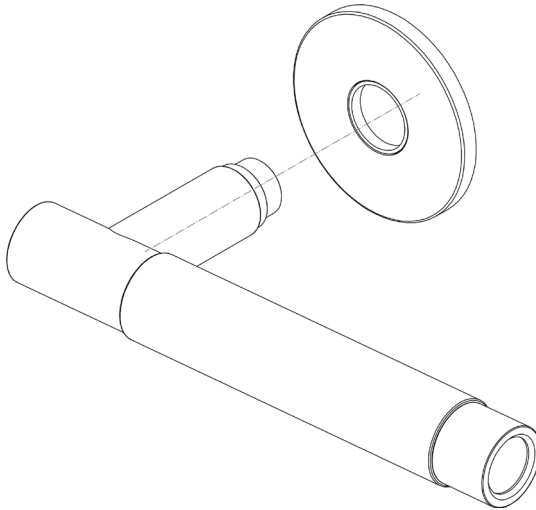


ITEM	DESCRIPTION	QTY
A	Spindle	1
B	Chassis	2
C	Alignment Washer	2
D	Screw	4
E	Shoulder washer	2
F	Rose (Sold Separately P8010)	2
G	Handle assembly	2
H	Grub screw	2
I	Allen key	1

# Fitting Instructions

## NOTE:

To assist in removing the rose from the chassis when fitting, use the door handle assembly to push on the shoulder washer while holding the rose securely.



**SAMUEL HEATH**  
**Head Office and Customer Service**  
Leopold Street  
Birmingham  
England  
B12 0UJ

T: +44 (0)121 766 4200  
F: +44 (0)121 772 3334

[Info@samuel-heath.com](mailto:Info@samuel-heath.com)  
[www.samuel-heath.com](http://www.samuel-heath.com)

**US Customer Service**  
Federal I.D. No. 58-1504682  
[www.samuel-heath.com](http://www.samuel-heath.com)

9-3037  
Issue: C